



Portraits of Beta
Leadership Summits



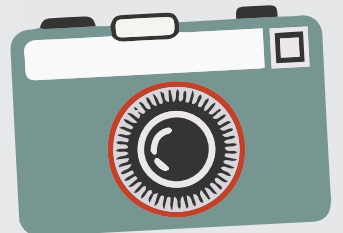
Beta Leadership Mission

The mission of the National Beta Leadership Program is to inspire tomorrow's leaders to achieve their personal best through service, character, and achievement.

Objectives of Student Leadership Summits

Students Will:

- Identify personal behaviors and personality styles
- Commit to identifying core ethical and personal values, and commit to act on them
- Develop relationships where the dignity and contributions of all people are respected
- Develop skills to be able to successfully work in groups and teams to accomplish a collective goal
- Connect with like-minded individuals in order to promote the ideals of National Beta
- Increase their capability to achieve goals



Beta Leadership Principles

Growth: Developing the mind, body, and spirit

Values: Doing what is right

Character: Being conscious of your personal legacy

Connect: Developing relationships that encourage collaboration and teamwork



Cost

\$50 registration fee per member.

Sponsors and chaperones are free. The entire registration fee is non-refundable, but substitutions are permitted.

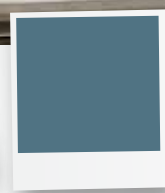
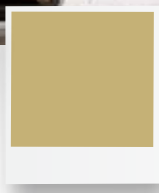
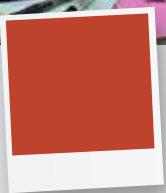
Deadline

Please visit <https://www.betaclub.org/events/student-leadership-summits> for deadlines. All students must be registered by this date in order to attend.

Register

- Go to *betaclub.org/events*
- Click *Leadership Summits*
- Click *Register*
- Log in using only sponsor's username and password
- Register online (you will not have to enter individual names, only the number of students attending)
- Click on *Leadership Challenges* if your club plans on participating
- Print registration
- Pay by credit card, purchase order (PO) or check
- Mail registration and check to:

*The National Beta Club
151 Beta Club Way
Spartanburg, SC 29306*





Elementary Schedule

Day 1

10:00am - 11:00am
11:00am - 12:00pm

Early Registration
Leadership Representative
Interviews

12:30pm - 1:00pm
1:00pm - 3:00pm

Registration
Leadership Session 1

3:30pm - 4:30pm
4:15pm - 5:15pm

Beta Training
Collaboration Connection

5:30pm - 6:30pm

Project Proposal

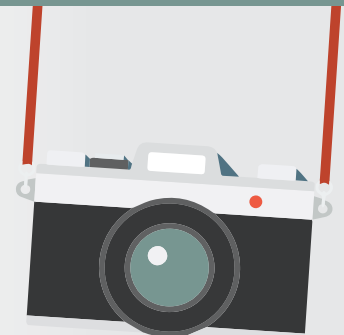
Day 2

9:30am - 11:00am
9:45am - 10:30am
11:00am - 12:00pm

Leadership Session 2
Sponsor Meeting
Lead Outside the Box

Featured Speakers:

Visit [betaclub.org/
events/student-lead-
ership-summits](https://betaclub.org/events/student-leadership-summits) for a
list of speakers.





Junior Schedule

Day 1

10:00am -11:00am
11:00am - 1:00pm
1:30pm - 2:30pm
3:00pm - 4:00pm
4:15pm -5:15pm
5:30pm - 6:30pm

Registration
Leadership Session 1
Beta Training
Collaboration Connection
Leadership Representative Interviews
Project Proposal

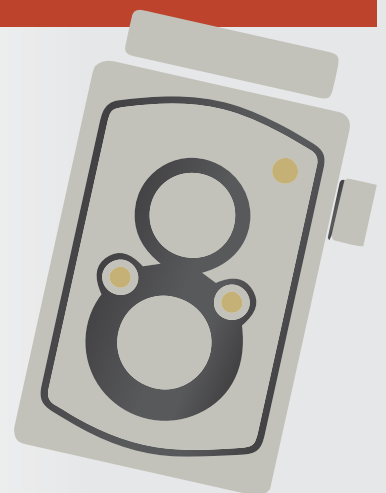
Day 2

8:00am - 9:30am
8:15am - 9:00am
9:30am - 10:30am

Leadership Session 2
Sponsor Meeting
Lead Outside the Box

Featured Speakers:

Visit [betaclub.org/
events/student-lead-
ership-summits](http://betaclub.org/events/student-leadership-summits) for a
list of speakers.





Senior Schedule

Day 1

10:00am - 11:00pm

12:15pm - 1:15pm

12:15pm - 1:15pm

12:30pm - 1:00pm

1:30pm - 2:30pm

3:00pm - 5:00pm

5:30pm - 6:30pm

Early Registration

Beta Training

Leadership Representative

Interviews

Registration

Collaboration Connection

Leadership Session 1

Project Proposal

Day 2

8:15am - 9:15am

11:00am - 12:30pm

11:15am - 12:00pm

Lead Outside the Box

Leadership Session 2

Sponsor Meeting

Featured Speakers:

Visit betaclub.org/events/student-leadership-summits for a list of speakers.



Leadership Challenges



Leadership Representative



Project Proposal



Collaboration Connection



Lead Outside the Box

There are four leadership challenges offered at our regional leadership summits. Clubs will be able to register for each of the regional leadership challenges online during the registration process. Times for the challenges are listed in the tentative schedule, but are subject to change due to the number of participants competing. Awards for these challenges, as well as the appointment of one elementary, two junior and three senior leadership representatives will be given during the final leadership session.



Beta Training

Beta Member training is designed for current Betas. The program will discuss topics such as:

- Understanding the basics of National Beta and how it works
- The four pillars of Beta
- Attributes of an effective leader
- Tips and activities for successful members
- Planning ahead for Service and Outreach
- Motivating club members
- Bringing awareness to National Beta events

Advanced registration is required and space is limited. Four Beta members per school are eligible.



Leadership Representative

ELIGIBILITY: An Elementary Representative must be a 4th or 5th grade student, a Junior Representative must be a 6th or 7th grade student, and a Senior Representative must be a 9th, 10th, or 11th grade student in good standing, officially enrolled in National Beta and registered for the Regional Leadership Summit by the deadline.

Representatives appointed at each regional summit are eligible to interview for the following positions: National Senior Leadership Ambassador (3), National Junior Leadership Ambassador (2) and National Elementary Leadership Ambassador (1). Participation allows students to collaborate with fellow members, compete in a collaborative project on-site, as well as serve as a representative the following year. These appointed National Representatives will also help facilitate a Leadership Session at the following year's National Convention.

*** Only one student from each club may interview in a Beta calendar year. If selected as Leadership Representative, the student may not run for state office at the convention or the following year. A club must have 5 registered members in order to interview a Leadership Representative.**

Competition Guidelines

The following rules and regulations should be read carefully. By submitting the nomination and recommendation form, you are agreeing to abide by these rules and regulations:

1. One Elementary Leadership Representative, two Junior Leadership Representatives and three Senior Leadership Representatives will be selected and serve the following year.
2. The Sponsor(s) or Executive Head of the representative's school must write a brief recommendation during the registration process to include, but not limited to, the student's leadership qualities.
3. If a representative is selected and later dropped from the local club or if the representative is not enrolled actively in school during the entire term, the representative forfeits the right to serve as a Leadership Representative. It is imperative for the selected representative to notify the National Office immediately if he/she is unable to serve.
4. Nominees will be given an onsite task and be evaluated on collaborative/leadership skills as well as a short interview.
5. Representatives must wear business casual attire to the meeting/interview.
6. National Leadership Ambassadors selected at the National Convention must attend the following year's National Convention to help facilitate the Leadership Sessions.
7. Submission of the registration is a pledge stating that he/she will attend all of the representative meetings and sessions of the Convention, and will fulfill all of the duties assigned the following year. This means he/she is obligated to attend all meetings and sessions both years, when nominated and when serving as a Regional Leadership Representative or National Leadership Ambassador. Failure to fulfill this obligation will result in the representative forfeiting his/her opportunity to interview and serve.
8. Students selected as a Regional Leadership Representative or National Leadership Ambassador are not eligible to run for state office at the state convention or the following year.



Collaboration Connection

Teams of 4 to 6 students will engage in quick, creative, and critical thinking challenges. The team members must think on their feet by applying collaborative leadership skills and make connections to produce a response in a given time frame. The challenge will be a combination of performance-based and task-based problem solving.

Competition Guidelines

1. Teams will consist of 4-6 students.
2. Teams will be required to collaboratively engage in higher level cognitive abilities such as abstract reasoning, problem solving and memory skills.
3. The challenge will be given onsite and requires students to complete the challenge in a given time frame.
4. Awards will be given to the top exhibitors at the final session.

* Students may not be able to participate in multiple challenges due to the schedule overlap at this summit or National Convention.

Judging Criteria

Creativity
25%

Collaboration
25%

Communication
25%

**Critical
Thinking**
25%

Educational Connections

- Leadership Skills
- Creativity & Innovation
- Communication & Collaboration
- Critical Thinking & Problem Solving



Project Proposal

Teams of 3 to 5 students will identify, design, and create a new service project proposal that addresses at least one real community need. Clubs will showcase that community need and highlight the creative service project proposal in an expo format.

Competition Guidelines

1. The entire club may participate in the service project, but a group of 3-5 students will present the project in an expo format.
2. Teams will identify a need in their community.
3. Teams will describe the plan of action and how the club implement the service project proposal.
4. Teams will create a visual logo of the service project proposal and present how the project will be executed.
5. Each team may use visuals in the presentation, but electrical outlets and projectors will not be provided.
6. Handouts and other documentation may be given to others to review during the expo.
7. Teams will have a two minute time limit to present followed by a question and answer segment by evaluators.
8. Awards will be given to the top exhibitors at the final session.

* Students may not be able to participate in multiple challenges due to the schedule overlap at this summit or National Convention.

Judging Criteria

Creativity of Project Proposal
25%

Collaboration
25%

Communication of Ideas
25%

Presentation Skills
25%

Educational Connections

- Leadership Skills
- Creativity & Innovation
- Communication & Collaboration
- Critical Thinking & Problem Solving



Lead Outside the Box

Teams of 2 to 4 students will be given a real-world problem at the beginning of the summit. On the second day of the summit, teams will give a two minute presentation of how they solved the given problem followed by a question and answer segment.

Competition Guidelines

1. The entire club may participate in the problem solving, but a group of 2 to 4 students will present the solution to the problem.
2. Teams will be given a real-world problem at the beginning of the summit
3. Each team may use visuals in the presentation, but electrical outlets and projectors will not be provided.
4. Teams will have a two minute time limit for the presentation and evaluators may ask questions about their solution.
5. Awards will be given to the top exhibitors at the final session.

* Students may not be able to participate in multiple challenges due to the schedule overlap at this summit or National Convention.

Judging Criteria

Creativity of the Solution
25%

Collaboration of Club
25%

Communication of Ideas
25%

Presentation Skills
25%

Educational Connections

- Leadership Skills
- Creativity & Innovation
- Collaboration & Communication
- Critical Thinking & Problem Solving